

FUKIEN SECONDARY SCHOOL
S5 First Term Uniform Test (2021-2022)
Geography
(1 hour 15 minutes)

Date: 9th November 2021

Name: _____

Time: 10:30 a.m. - 11:45 a.m.

Class: _____ No.: _____

Instructions to Candidates:

1. The full mark of this paper is 40.
2. Answer **ALL** questions.
3. Write all answers on the single-lined paper provided.
4. Hand in both the question paper and the single-lined paper at the end of the test.

I. Multiple Choice Questions (10 marks)

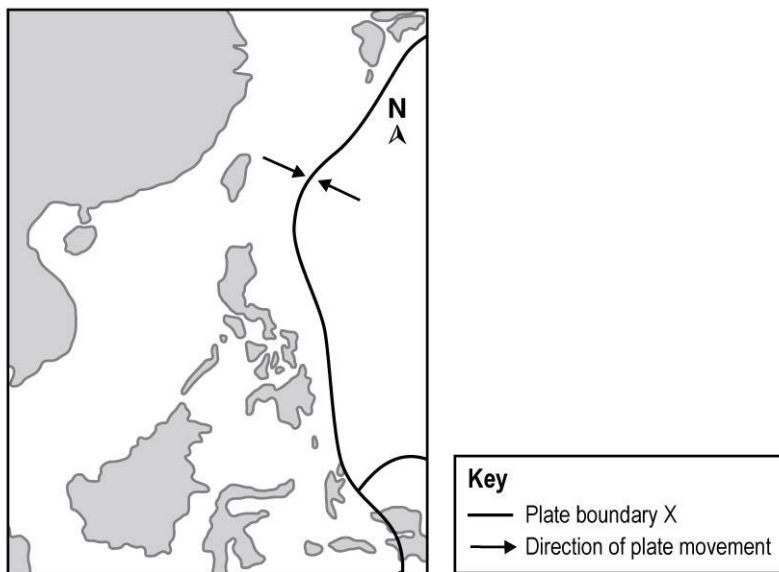
Choose the best options and write the correct answers on the single-lined paper.

1. Refer to the map below. Landform feature X is formed by _____.



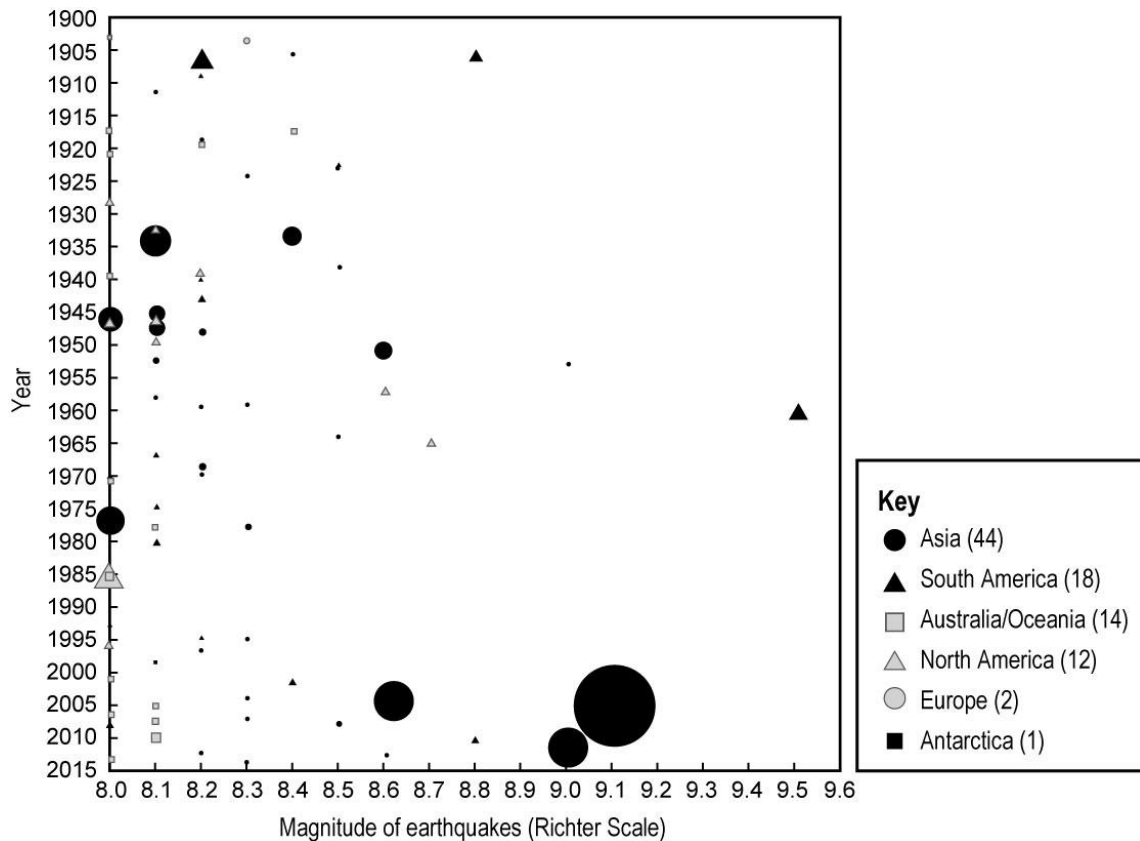
- A. compressional force
- B. tensional force
- C. shear stress
- D. vertical displacement of rocks

2. Refer to the map below. Which of the following landform features can be found along plate boundary X?



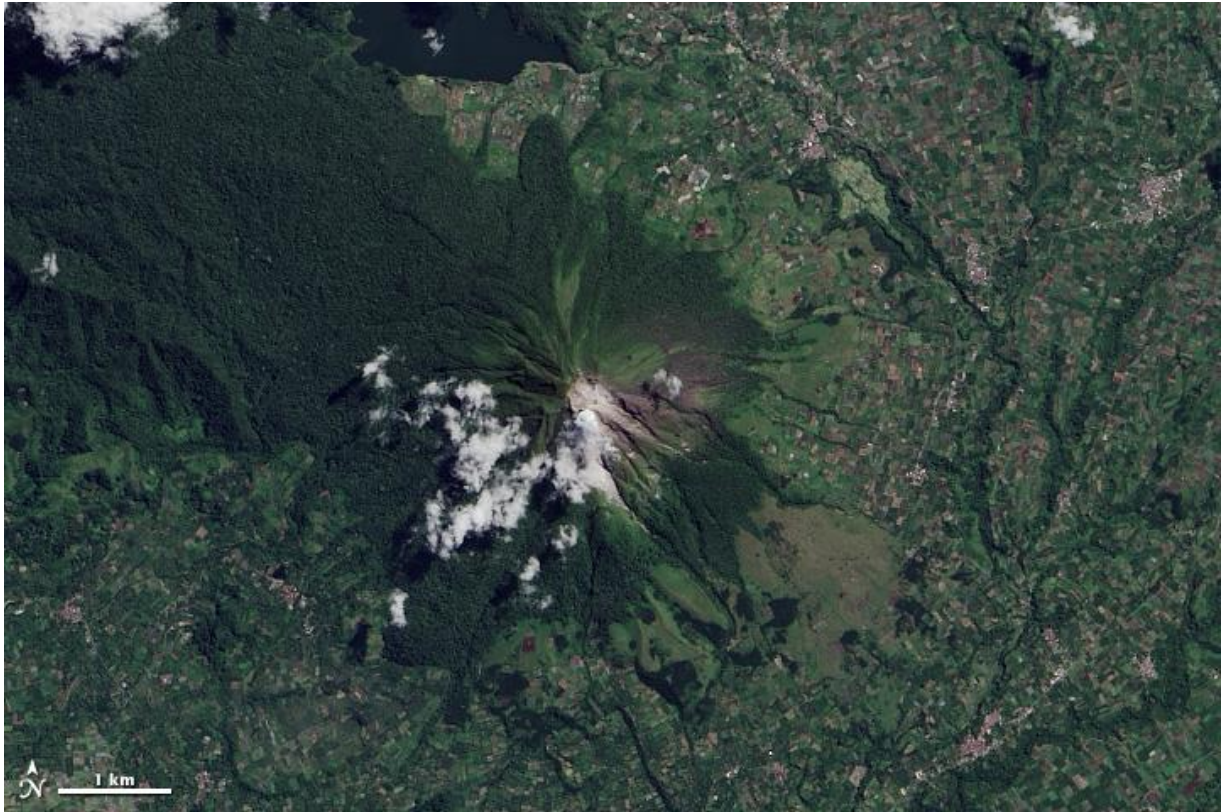
- (1) Ocean trench
 - (2) Volcanic island arc
 - (3) Mid-oceanic ridge
- A. (1) and (2) only
- B. (1) and (3) only
- C. (2) and (3) only
- D. (1), (2) and (3)

3. The figure below shows earthquakes with magnitude 8.0 or above since 1900. Which of the following statements is/are correct?



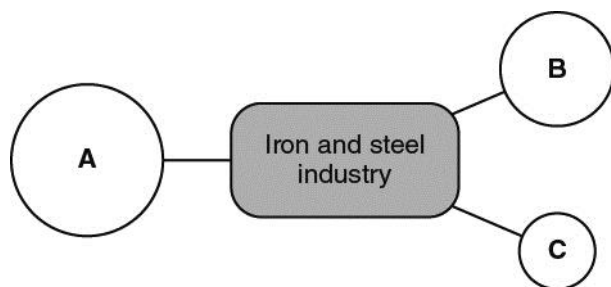
- (1) The earthquake of the highest magnitude in the last century happened in Asia.
- (2) High earthquake magnitude does not necessarily lead to a large number of casualties.
- (3) There is no apparent temporal pattern of large-scale earthquakes.
- A. (1) only
- B. (2) only
- C. (3) only
- D. (2) and (3) only
4. Which of the following actions taken by international voluntary organizations can minimize the impacts of natural hazards on less developed countries?
- (1) Providing immediate medical aids
- (2) Offering education programmes
- (3) Setting up stricter regulations on safety design of housing
- A. (1) and (2) only
- B. (1) and (3) only
- C. (2) and (3) only
- D. (1), (2) and (3)

5. The satellite image below shows a dormant volcano in Indonesia. Which of the following reasons can account for the human development near the volcano?



- (1) Fertile soil favours farming activities.
 - (2) Geothermal power is well-developed.
 - (3) There is a low probability of volcanic eruptions as perceived by the people.
- A. (1) and (2) only
- B. (1) and (3) only
- C. (2) and (3) only
- D. (1), (2) and (3)

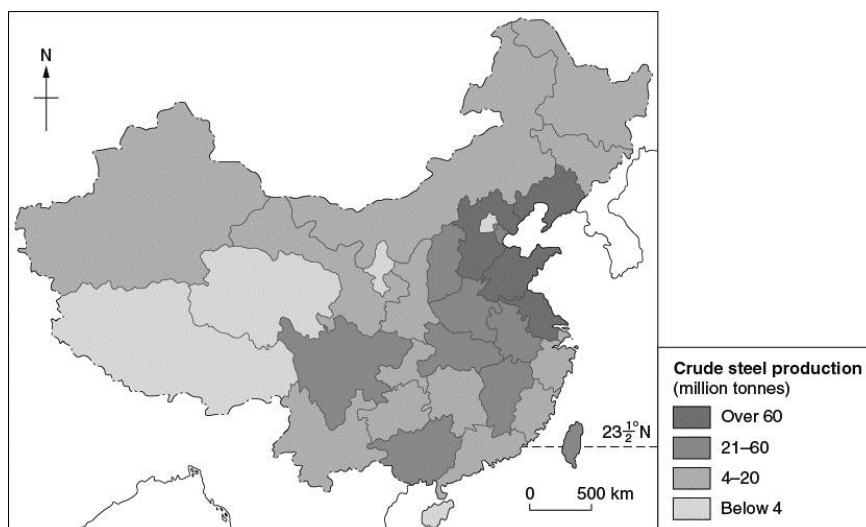
6. The figure below shows the relative importance of different locational factors for the iron and steel industry in south-east China. What are A, B and C respectively?



**Size of the circles indicates the relative importance of the corresponding locational factors.*

	A	B	C
A.	Raw materials	Government policy	Market
B.	Government policy	Raw materials	Market
C.	Government policy	Market	Raw materials
D.	Market	Government policy	Raw materials

7. The figure below shows the distribution of crude steel production in China in 2014. Which of the following factors explain the distribution shown?



- (1) Agglomeration of iron and steel consuming industries
 (2) Availability of technology
 (3) Government policy
- A. (1) and (2) only
 B. (1) and (3) only
 C. (2) and (3) only
 D. (1), (2) and (3)

8. Which of the following factors explain(s) the moving out of iron and steel works from the major urban areas in China?
- (1) Serious air pollution
 - (2) Lack of raw materials in urban areas
 - (3) Workers are attracted to tertiary industries
- A. (1) only
 B. (3) only
 C. (1) and (2) only
 D. (1), (2) and (3)
9. Which of the following statements about the changes in the iron and steel industry in China in the past decade is / are correct?
- (1) The influence of proximity to coal supply has decreased.
 - (2) Market forces have become more important in determining the location of the industry.
 - (3) Most of the steel products are exported to overseas markets.
- A. (1) only
 B. (3) only
 C. (1) and (2) only
 D. (1), (2) and (3)
10. What are the characteristics of the following industries / industrial firms?

	Anshan Iron and Steel Works in Anshan, China	Smart phone assembly plants in the Zhujiang Delta Region, China	Apple Computer Headquarters in California, the USA
A.	Market-oriented	Labour-intensive	Power-oriented
B.	Raw material-oriented	Labour-intensive	R&D-intensive
C.	Raw material-oriented	R&D-intensive	Power-oriented
D.	Market-oriented	R&D-intensive	R&D-intensive

II. Data-based Question (18 marks)

- Figure 1a shows the distribution of active volcanoes in the world. Figure 1b shows the information about a volcanic activity in Japan. Table 1c shows the information of an earthquake happened in Chile. Table 1d shows the information of Illapel, Chile.

Figure 1a

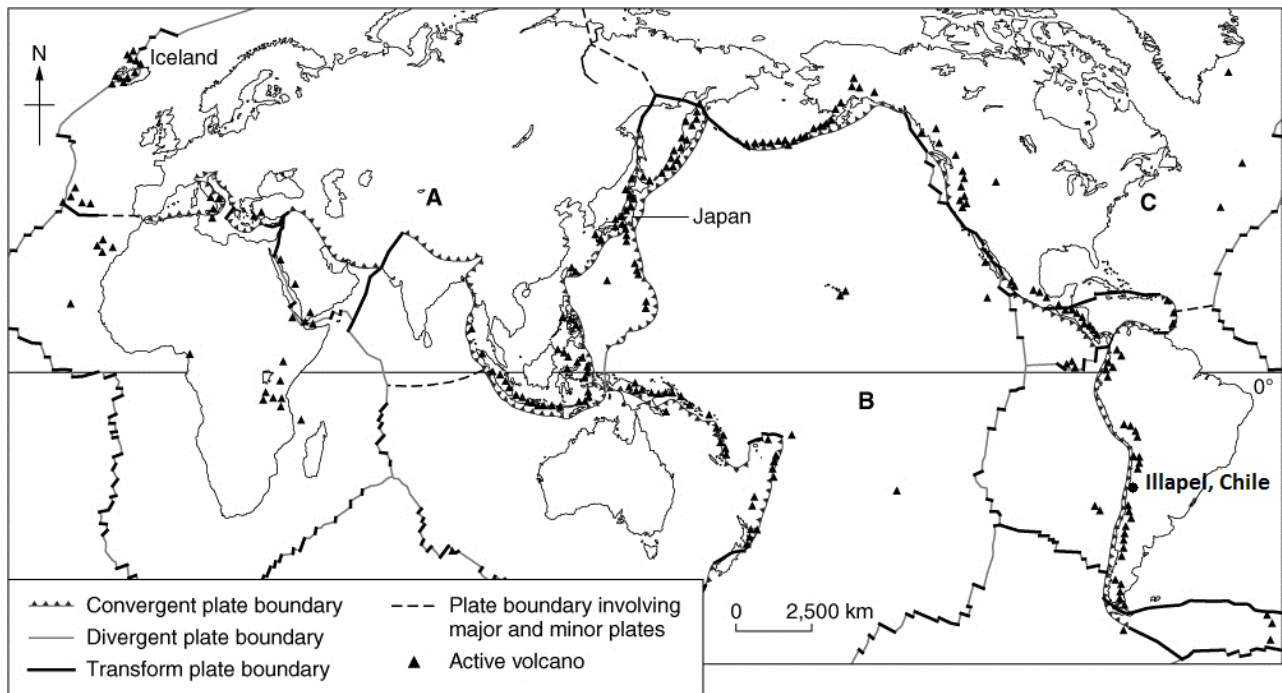


Figure 1b

A submarine volcano erupted near Nishino-shima, which is located in the south of Tokyo, Japan in November 2013. A new island of 38 metres in elevation was produced. No death and injury was reported.

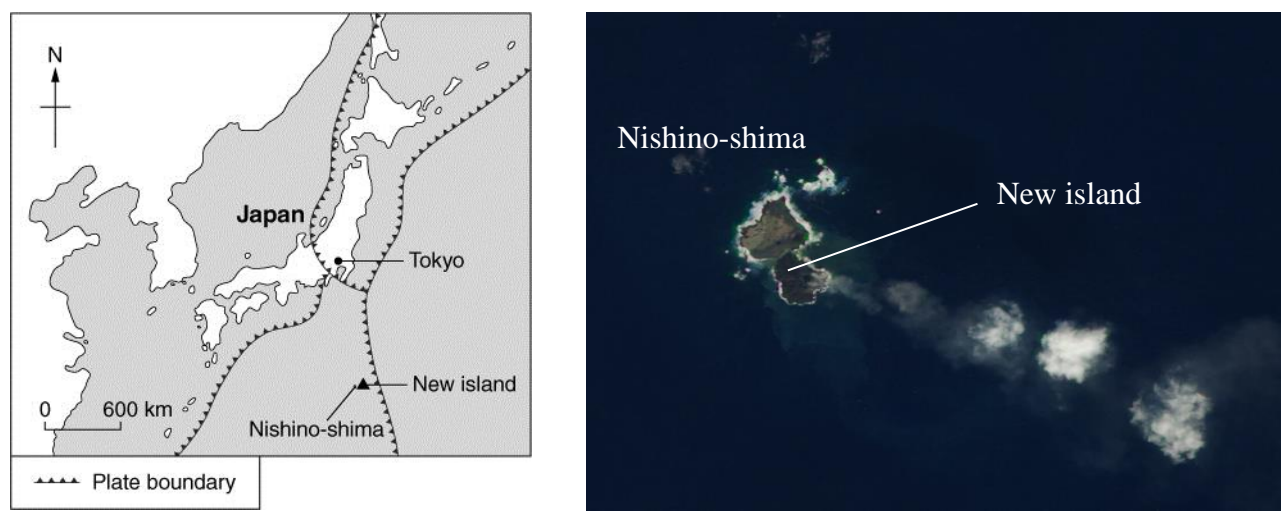


Table 1c

Date of occurrence	16 September 2015
Local time	19:54
Magnitude	8.3
Epicentre	46 km offshore from Illapel
Depth of focus	20.7 km
Casualties	13 fatalities and 6 missing in Illapel

Table 1d

Total area	2 629.1 km ²
Population	30 074

(a) Refer to Figure 1a.

- (i) Name plates A, B and C. (3 marks)
- (ii) Describe the spatial distribution of active volcanoes. (3 marks)

(b) Refer to Figures 1a and 1b. Compare the formation of Iceland and the new island mentioned in Figure 1b. (6 marks)

(c) Refer to Figure 1a. Explain the formation of earthquake in Chile. (4 marks)

(d) Refer to Tables 1c and 1d. Explain the reasons for the low death toll of earthquake in Illapel. (2 marks)

III. Short Essay (12 marks)

- Account for the characteristics of the IT industry. Discuss whether government policy is the most important locational factor affecting the development of the IT industry in the USA. (12 marks)

-- End of Paper --