

FUKIEN SECONDARY SCHOOL

S3 Final Examination (2020-2021)

Geography

(1 hour)

Date: 11th June 2021

Time: 8:30 a.m. - 9:30 a.m.

Name: _____

Class: _____ No.: _____

Instructions to Candidates:

1. The full mark of this paper is 100.
2. Write **ALL** answers on the answer sheets provided.
3. Hand in both the question paper and the answer sheets at the end of the examination.

I. Multiple Choice Questions (10 marks)

Choose the best answers and put a ✓ in the correct boxes on the answer sheets.

1. In Hong Kong, the summer monsoon blows mainly from the _____; and the winter monsoon blows from the _____.
 - A. north; southeast
 - B. north; northwest
 - C. south; northeast
 - D. south; southwest
2. Which of the following are the characteristics of plants in tropical rainforests?
 - (1) Diverse plant species
 - (2) Slow growth of plants
 - (3) Evergreen
 - A. (1) and (2) only
 - B. (1) and (3) only
 - C. (2) and (3) only
 - D. (1), (2) and (3)
3. Monsoon system is caused by the seasonal change in _____ due to the temperature differences between land and sea.
 - A. precipitation
 - B. cloud amount
 - C. wind speed
 - D. wind direction

4. Which of the following is **not** a condition for the formation of typhoons?
- A. Higher sea temperature
 - B. Large amount of air moisture
 - C. Continents
 - D. Spinning of air currents
5. How should we protect ourselves when the warning signal below is issued?



- (1) Avoid walking close to steep slopes
 - (2) Avoid driving in hilly areas
 - (3) Go hiking
- A. (1) and (2) only
 - B. (1) and (3) only
 - C. (2) and (3) only
 - D. (1), (2) and (3)
6. Which of the following descriptions about earthquakes is correct?
- A. Destructive earthquakes are caused by the sinking current of magma.
 - B. Destructive earthquakes are caused by the rising current of magma.
 - C. Destructive earthquakes occur in Africa once a year.
 - D. There are frequent earthquakes in Guangzhou.
7. Where is the largest tropical rainforest located?
- A. Northern Australia
 - B. The Congo Basin
 - C. Papua New Guinea
 - D. The Amazon Basin

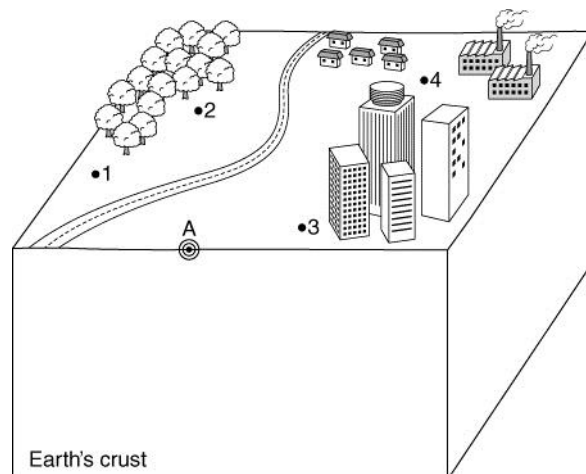
8. Which of the following comparisons between the earthquakes in Haiti and New Zealand are correct?

	Earthquake in Haiti	Earthquake in New Zealand
(1)	Greater economic loss	Smaller economic loss
(2)	More deaths	Fewer deaths
(3)	Less efficient rescue	More efficient rescue
(4)	Longer time to rebuild the affected area	Shorter time to rebuild the affected area

- A. (1) and (2) only
 B. (1), (3) and (4) only
 C. (2), (3) and (4) only
 D. (1), (2), (3) and (4)

9. Refer to the figure below. If an earthquake occurs at A, which of the following locations would suffer the greatest loss?

- A. Location 1
 B. Location 2
 C. Location 3
 D. Location 4



10. Which of the following descriptions about the relief of Hong Kong are correct?

- (1) The relief of Hong Kong is steep and most of the land is hilly.
 (2) Most lowlands in Hong Kong are located in Tai Mo Shan.
 (3) Many of the lowlands in Hong Kong come from reclamation.
 (4) The highest peak in Hong Kong is Lion Rock.

- A. (1) and (3) only
 B. (2) and (4) only
 C. (1), (2) and (4) only
 D. (1), (3) and (4) only

II. Matching (10 marks)

Match Column A with Column B.

Column A (Characteristics of tropical rainforests)	Column B (Functions)
1. Broad leaves	A. Shed rainwater quickly
2. Buttress roots	B. Support the tall trees
3. Drip-tip leaves	C. Absorb nutrients and water from the host plants
4. Parasites	D. Help them rise above to the surrounding trees to compete for sunlight
5. Straight tree trunks	E. Absorb more sunlight

Column A (Engineering works)	Column B (Functions)
6. Weepholes	F. Offer physical support to steep slopes
7. Flexible barriers	G. Prevent water from infiltrating into slopes
8. Cover the slope with concrete	H. Trap rock debris from falling down the slopes
9. Surface channels	I. Drain excess water from slopes
10. Retaining walls	

III. Data-based Questions (62 marks)

1. Study Figure 1a and Table 1b and answer questions (a) to (e).

Figure 1a

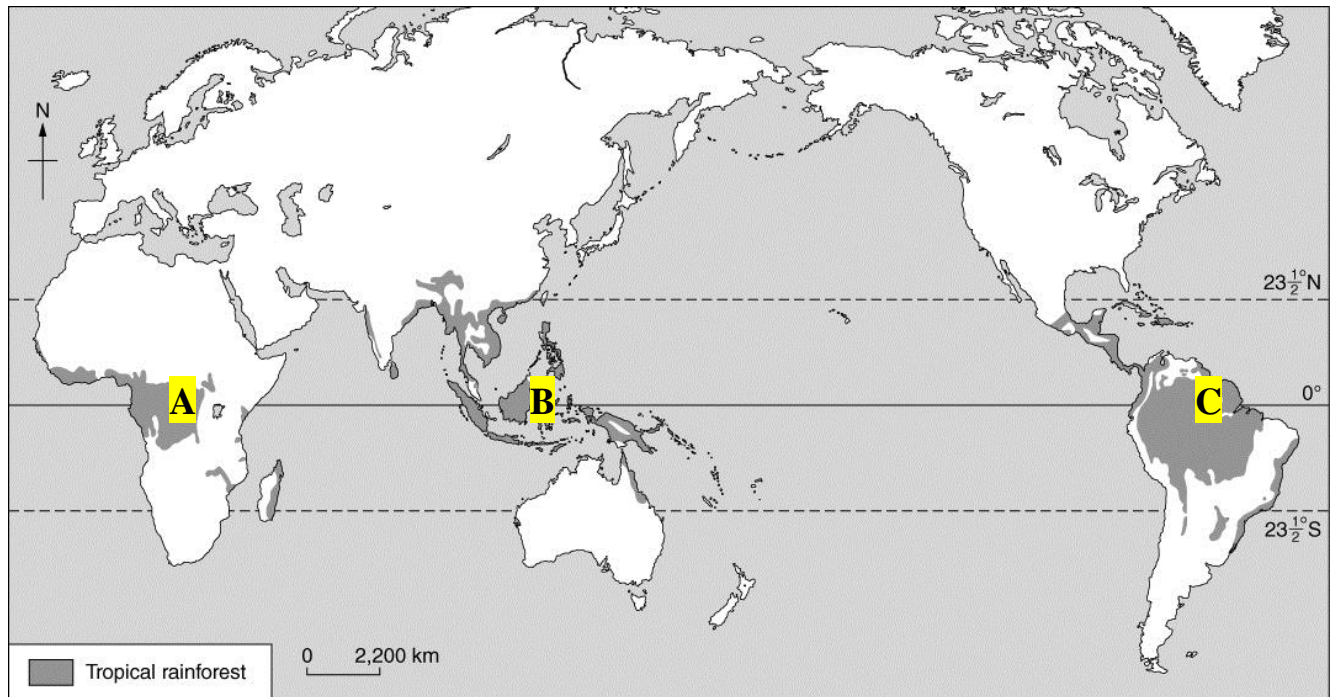


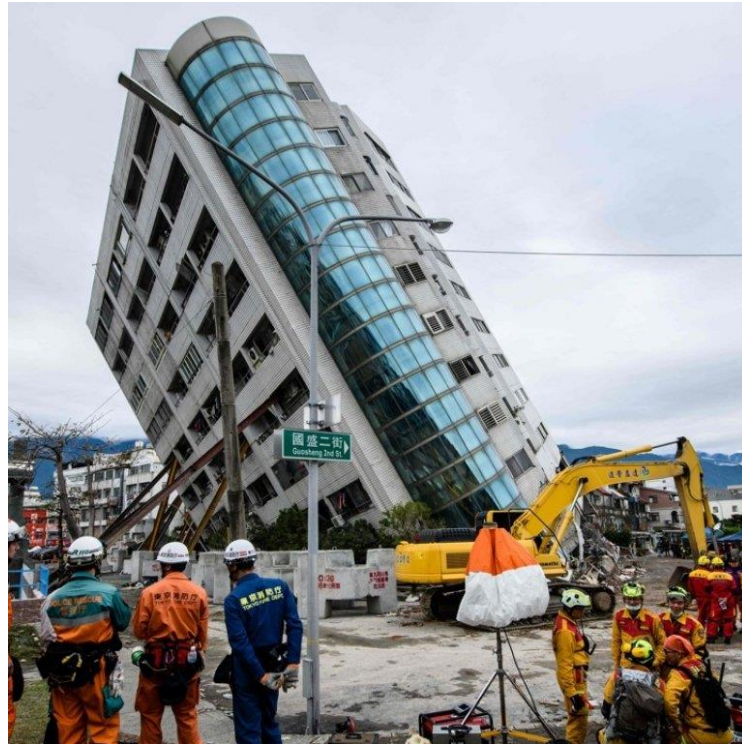
Table 1b Climatic data of tropical rainforest B

Month	1	2	3	4	5	6	7	8	9	10	11	12
Temperature (°C)	26	26	27	27	27	27	27	26	26	26	26	26
Rainfall (mm)	199	146	170	198	203	177	180	200	249	294	317	301

- (a) Describe the distribution of tropical rainforests in the world. (4 marks)
- (b) Calculate the annual rainfall of tropical rainforest B. (2 marks)
- (c) Calculate the annual mean temperature of tropical rainforest B. (2 marks)
- (d) Draw a climatic graph of tropical rainforest B. (6 marks)
- (e) Explain why tropical rainforests are the most luxuriant forests in the world. (4 marks)

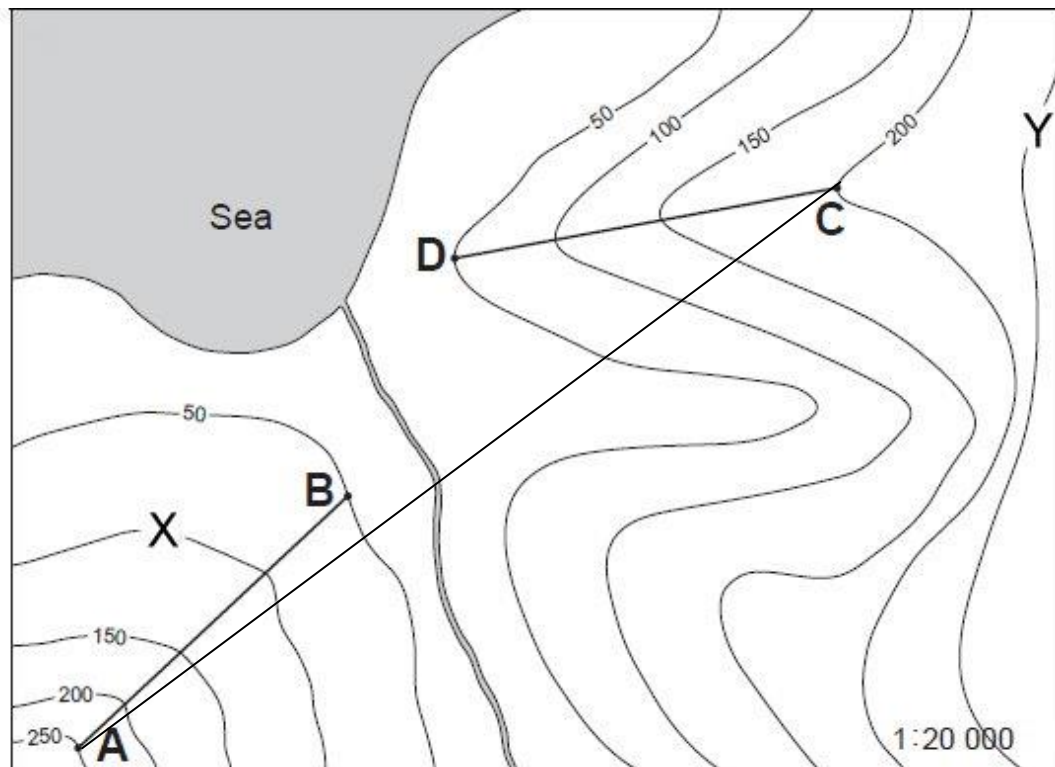
2. Study Figure 2 and answer questions (a) to (d).

Figure 2



- (a) Identify the tectonic hazard shown in Figure 2. (2 marks)
- (b) Explain the forming processes of this tectonic hazard. (4 marks)
- (c) Describe **TWO** environmental impacts brought by this tectonic hazard. (4 marks)
- (d) Describe **TWO** preventive measures that can be done by the government to reduce the impacts brought by this tectonic hazard. (4 marks)

3. Study the map below carefully and answer questions (a) to (f).



- (a) What is the vertical interval of the map? (2 marks)
- (b) Calculate the gradients of slope AB and slope CD. Show your workings. (6 marks)
- (c) Which slope, slope AB or slope CD, is more vulnerable to landslides? (2 marks)
- (d) (i) Draw a cross section from A to C with a vertical scale of 1 cm to 50 m. (6 marks)
- (ii) Calculate the vertical exaggeration of AC. Show your workings. (4 marks)
- (e) Explain **TWO** physical factors leading to the occurrence of landslides in Hong Kong. (6 marks)
- (f) Apart from the engineering works, what can the government do to reduce the damage caused by landslides? Give **TWO** measures. (4 marks)

IV. Long Questions (18 marks)

Answer **BOTH** questions in complete sentences and paragraphs.

1. Tropical rainforests are important to human beings. Describe and explain **THREE** of the reasons. (9 marks)
2. Why do some people still live in hazard-prone regions? Give **THREE** reasons. (9 marks)

-- End of Question Paper --